

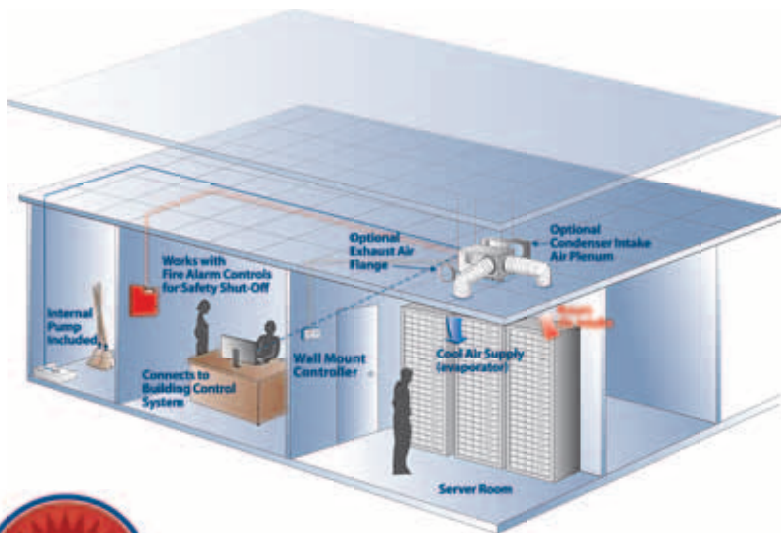


MovinCool®

The #1 spot cooling solution



Ceiling mounted A/C



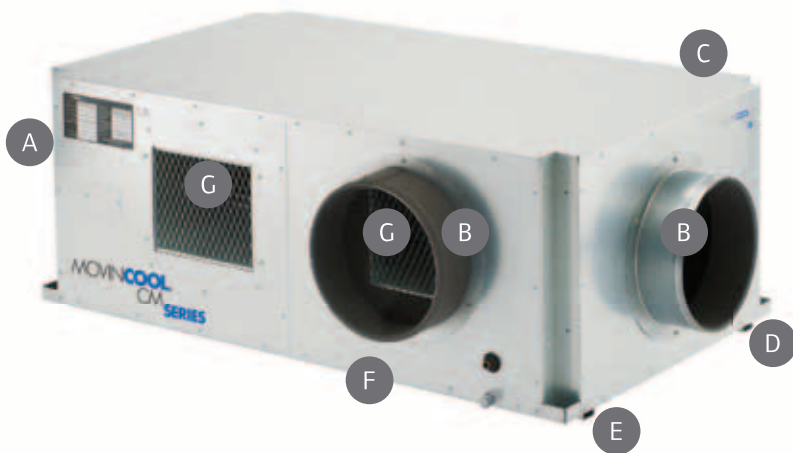
The latest line extension in the award-winning MovinCool line of spot coolers is the CM12 and CM25, ceiling-mounted packaged air conditioners. Featuring the shortest top-to-bottom profile in the industry, the CM Series fits into virtually any drop-ceiling, making it the perfect cooling solution for server rooms with limited floor space.

CM12 key features

- 10,500 Btu/h at 80°F 50% RH (evaporator)
95°F 50% RH (condenser)
- 13,000 Btu/h at 95°F 60% RH
- 115V, 15 amps – no special electric required
- No floor space needed
- Can fit into tight ceiling spaces

CM25 key features

- 25,000 Btu/h at 80°F 50% RH (evaporator)
95°F 50% RH (condenser)
- High sensible cooling at 18,900 Btu/h
- Environmentally-friendly design - 14 SEER, variable-speed compressor, R-410A refrigerant and RoHS compliant
- Compact, self-contained unit is easy to install
- Wall mount controller offers advanced programmability and settings



- A Warning signals and audible alarms for condensation overflow
- B Built-in flanges. Detachable flanges enable easy installation*.
- C Inverter compressor*
- D Built-in mounting brackets designed for off-the-shelf mounting hardware
- E Vibration isolator included*
- F Wide operating range
- G Inverter fan motors*

Where it's used

- Server rooms
- Telecom closets
- Off-season spot cooling
- Overhead spot cooling
- Supplemental cooling
- Hotels
- Anywhere space is limited

Spot cooling solutions with MovinCool accessories

The all-in-one design of MovinCool air conditioners makes them the ideal cooling solution for virtually any heat-related problem. Using the optional accessories not only gives you the ability to customize the cooling application, but also makes the unit work more efficiently. In this brochure, we've grouped the accessories into the most common applications such as cooling multiple areas with one unit, automatically removing condensation and adding a remote control. The possibilities are endless. And with genuine MovinCool accessories, you are assured of quality parts engineered and designed specifically to gain optimum performance from your MovinCool spot air conditioner.

How to select MovinCool accessories

The most common accessory installations are included in this brochure.

1. Find your MovinCool model category: Ceiling Mount, Office Pro®, Classic Plus, or Classic.
2. Find the application(s) suited to your specific need.
3. Order the part number(s) for your specific MovinCool model.

Individual part descriptions for MovinCool CM12 and CM25

A	Exhaust Air Flange	10" or 12" diameter gray metal flange with mounting screws.
B	Condenser intake air plenum	Gray metal plenum with 10" or 14" diameter return air flange. Includes mounting screws.
C	Wall thermostat	Weekday and weekend programmable digital millivolt thermostat.
D	Condensate pump kit	230V pump kit to boost lift capacity to 17-feet. Includes installation hardware.

Condenser filter kit (not shown). Optional filter kit for condenser air intake for use in heavily dusty environments.

Accessories

Condenser air removal

If removing the exhaust is needed, MovinCool makes it easy. The flange can be used to attach a 10-inch (CM12) or 12-inch (CM25) diameter duct for more air exhaust options (duct not included).

#	PART NAME	CM12	CM25
1	Exhaust air flange	481170-0440	481170-0191

Condenser air intake

The air plenum can be used to prevent negative air pressure in the ceiling space when using the exhaust air-flange and duct to remove exhaust from the ceiling space. Simply attach a 10-inch (CM12) or 14-inch (CM25) diameter duct to the air plenum to bring in air from outside of the ceiling space (duct not included).

#	PART NAME	CM12	CM25
2	Condenser intake air plenum	481769-0220	481769-0240
2A	Condenser filter kit (not shown)	N/A	484409-0130

Wall thermostat

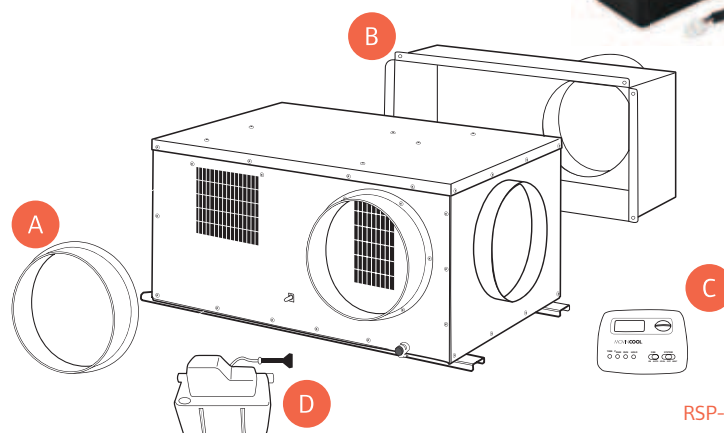
Weekday and weekend programmable digital millivolt thermostat.

#	PART NAME	CM12	CM25
3	Wall thermostat	LA484500-3430	Included

Auto condensate removal

If more than a 4-foot lift capacity is needed, simply use this optional condensate pump kit to boost lift capacity to 17-feet.

#	PART NAME	CM12	CM25
4	Condensate pump kit	N/A	GX484789-0180



Office Pro® Series



The Office Pro is designed to function in today's information critical office environments. Its modern styling allows it to blend with most interiors yet it offers the same cooling power as our Classic industrial models. By cooling down to the 65°F, the Office Pro Series is ideal for cooling electronic equipment.

With programmable electronic temperature control, the Office Pro is affordable insurance when the fixed air conditioning system is no longer sufficient or completely fails. The Office Pro cools people and electronic equipment instantly, quietly, and efficiently.

For spaces where hot air cannot be exhausted, we now offer a 1.5 ton, 115V water cooled model.

Key features

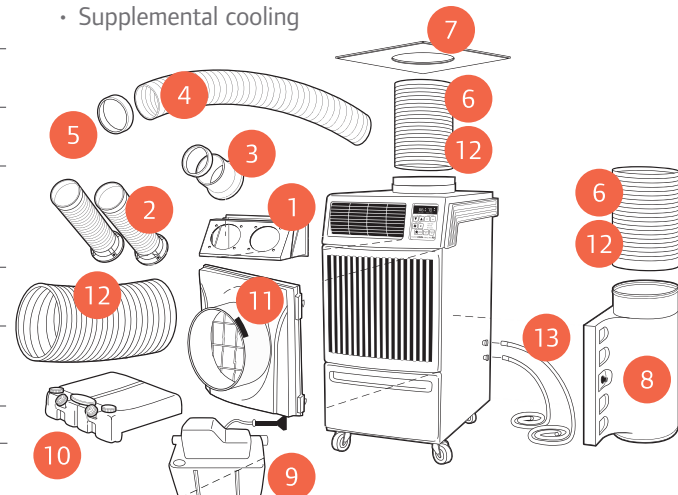
- Air or water cooled models available
- 24/7 programmable operating modes
- Digital temperature control
- Provides cooling in the mid-60's °F
- No costly installation necessary

Where it's used

- Server and telecom rooms
- Hospitals
- Laboratories
- Offices
- Schools
- Banks
- Emergency back-up
- Supplemental cooling



Individual part descriptions for MovinCool Office Pro™ series		
1	Nozzle adapter kit	Two-piece metal frame converts airflow from louvers to nozzles or cold air ducts. Includes mounting screws. (Nozzles and ducts sold separately)
1A	Duct adapter kit	Same as above, but for use with cold air flexible ducts. Includes flange. Use on Office Pro 36 or 60/63 only. (Cold air flexible ducts sold separately)
2	Nozzle kit	5" or 6" diameter white plastic nozzle that extends up to 2' in length. Includes flange, mounting screws and trim ring. (Purchase in sets of two)
3	Cold air flange kit	5" or 6" diameter white metal flange with wire clamp and mounting screws. Use with cold air ducts.
4	Cold air self-supported duct	5", 6" or 8" adjustable diameter, white polypropylene duct that extends from 6½' to 10' in length.
4A	Cold air flexible duct	8" diameter wire-reinforced, accordion-style duct in 25' lengths. (For Office Pro 36 and 60/63 only)
5	Trim ring	5" or 6" diameter black end-cap for cold air self-supported duct.
6	Warm air self-supported duct	12" diameter white, polypropylene plastic duct that extends 6½' to 10' in length. (N/A for Office Pro 36 exhaust and entire Office Pro 60/63)
7	Ceiling tile	24"×24" white tile with 12" hole for warm air self-supported duct. (24"×24" Sheet metal tile with 16" hole and built-in flange and tie-strap for Office Pro 36 exhaust and entire Office Pro 60/63)
8	Condenser air plenum	White plastic plenum for return air to condenser. Hinged for filter cleaning.
9	Condensate pump kit	110V or 220V pump kit includes ¾" diameter ×20' length clear vinyl hose and installation hardware.
10	Condensate tank	Drain tank storage for condensation. Requires condensate float, sold separately. (For Office Pro 60/63 only)
	Condensate float (not shown)	Controls water level in condensate tanks. (For Office Pro 60/63 only)
11	Evaporator air plenum	White plastic plenum for return air to evaporator. (For Office Pro 60/63 only)
12	Warm air flexible duct kit	12" diameter wire-reinforced, accordion-style duct in 10' lengths for condenser exhaust. Includes clamp. Duct is 16" in diameter and 25' in length for Office Pro 36 exhaust and entire Office Pro 60/63 only.
13	Hose kit	Two hoses for condensate water supply and return.



Accessories



Auto condensate removal: Why bother with emptying the drain tank when you can install a condensate pump to remove the water automatically? This pump has a 17-foot lift capacity to reach virtually any remote drain.

#	Part name	Office Pro® 12 & 18	Office Pro® W20	Office Pro® 24	Office Pro® 36	Office Pro® 60 & 63
9	Condensate pump kit	LA484789-0080	LA484789-0080	LA484789-0090	LA484789-0090	Included
10	Condensate tank	Included	Included	Included	Included	484730-0010
N/A	Condensate float (not shown) ^(a)	N/A	N/A	N/A	Included	484460-0010



Condenser heat removal: MovinCool makes removing exhaust easy. For air cooled models, simply replace the existing ceiling tile with the MovinCool ceiling tile accessory. Place the self-supported or flexible duct on top of the unit and insert it into the ceiling tile. For water cooled models, simply connect water supply and return with hose kit. That's all it takes.

#	Part name	Office Pro® 12 & 18	Office Pro® W20	Office Pro® 24	Office Pro® 36	Office Pro® 60 & 63
6	Warm air self-supported duct	481744-0060	N/A	481744-0060	N/A	N/A
12	Warm air flexible duct kit	LAY45771-0060 ⁽ⁱ⁾	N/A	LAY45771-0060 ⁽ⁱ⁾	LAY45820-0010	LAY45820-0010
7	Ceiling tile ^(b)	LA146373-8280	N/A	LA146373-8280	GX484410-8940	GX484410-8940
13	Hose kit	N/A	GX484009-0920	N/A	N/A	N/A



Condenser air intake: When balanced airflow is required, attach the air plenum with a duct from the side of the unit to an outside air source. The air to the condenser is pulled from outside the room to eliminate problems associated with negative air pressure.

#	Part name	Office Pro® 12 & 18	Office Pro® W20	Office Pro® 24	Office Pro® 36	Office Pro® 60 & 63
6	Warm air self-supported duct	481744-0060	N/A	481744-0060	481744-0060	N/A
12	Warm air flexible duct kit	LAY45771-0060 ⁽ⁱ⁾	N/A	LAY45771-0060 ⁽ⁱ⁾	LAY45771-0060 ⁽ⁱ⁾	LAY45820-0010
7	Ceiling tile ^(b)	LA146373-8280	N/A	LA146373-8280	LA146373-8280	GX484410-8940
8	Condenser air plenum	LAY84270-008A ^(b)	N/A	LAY84270-0050 ^(b)	LAY84270-0020 ^(b)	LAY84270-0060 ^(f)



Spot cooling or remote cooling: To use the Office Pro to spot cool specific areas, use the nozzle adapter in place of the standard louvers. Attach cold air ducts to the adapter to cool remote hot spots. Trim rings give a finished look and keep the ducts from unraveling. To improve efficiency, use the evaporator air plenum to recirculate cool air.

#	Part name	Office Pro® 12 & 18	Office Pro® W20	Office Pro® 24	Office Pro® 36	Office Pro® 60 & 63
1	Nozzle adapter kit	LA481769-0170	LA481769-0170	LAY84209-0010	LAY45770-0070 (6") ^(k)	LAY45770-0070 (6") ^(k)
1A	Duct adapter kit	N/A	N/A	N/A	LAY45770-0080 (8") ⁽ⁱ⁾	LAY45770-0080 (8") ⁽ⁱ⁾
2	Nozzle kit ^{*(c)}	LAY84209-0030	LAY84209-0030	484209-0050	484209-0050 (6")	484209-0050 (6")
3	Cold air flange kit ^{*(c)}	481170-0180	481170-0180	481170-0250	481170-0250 (6")	481170-0250 (6")
4	Cold air self-supported duct ^{*(d)}	481744-0090	481744-0090	481744-0030	481744-0030 (6") LAY45810-0080 (8") ^(g)	481744-0030 (6") LAY45810-0080 (8") ^(g)
4A	Cold air flexible duct ^{*(g)}	N/A	N/A	N/A	LAY45810-0030 (8")	LAY45810-0030 (8")
5	Trim ring ^(e)	481851-0200	481851-0200	481851-0210	481851-0210 (6")	481851-0210 (6")
11	Evaporator air plenum ^(f)	N/A	N/A	N/A	N/A	LAY84270-0070

NOTE: All part numbers come with one part except where noted. All kits include additional pieces such as clamps and screws. See parts description box for more information.
* Order 1 or 2 parts depending if 1 or 2 nozzles, flanges or ducts are needed.

(a) #10 is required

(b) #6 is required

(c) #1 is required

(d) #1 & 3 are required

(e) #4, 3 & 1 are required

(f) #12 is required for Office Pro 60/63 only

(g) #1A is required for Office Pro 36 & 60/63 only

(h) #6 & 8 are required

(i) If using with #7, part #481170-0190 is required.

(j) If using with #7, part #481170-0190 & #8 are required.

(k) Requires 4 nozzles or 4 flange kits and ducts.

(l) #4 or 4A is required

Specifications

MOVINCOOL
THE #1 SPOT COOLING SOLUTION



MovinCool™ technical specifications		CM12	CM25*	PC7	Office Pro® 12	Office Pro® 18	Office Pro® W20	Office Pro® 24*
Electronic features	Control	Millivolt thermostat	Wall mounted controller	Programmable	Programmable	Programmable	Programmable	Programmable
Cooling capacity	Rating conditions: 95°F at 60% RH	10,500 Btu/h ^{1,4}	25,000 Btu/h ^{2,4}	9,000 Btu/h ⁴	12,000 Btu/h	16,800 Btu/h	15,700 Btu/h ⁵	24,000 Btu/h
Electrical characteristics	Voltage requirement	1 Phase, 115V	1 Phase, 208/230V	1 Phase, 115V	1 Phase, 115V	1 Phase, 115V	1 Phase, 115V	1Phase, 208/230V
	Total power consumption	1.23 kW ¹	2.90 kW ²	1.12 kW	1.3 kW	1.7 kW	1.27 kW	2.9 kW
	Current consumption	11.9 amps ¹	12.6 amps ²	9.7 amps	11.9 amps	15.6 amps	11.7 amps	13.2 amps
	Recommended fuse size	15 amps	20 amps	15 amps	15 amps	20 amps	15 amps	20 amps
	NEMA plug configuration	N/A	N/A	5-15	5-15	5-20	5-15	6-20
	Min. - max. voltage	105-125	198-253	105-125	105-125	105-125	105-125	198-250
Fans	Motor output - high/low	0.04/0.013 kW Evap. 0.1/0.025 kW Cond.	0.21 kW Evap. 0.35 kW Cond.	0.025/0.015 kW Evap. 0.04 kW Cond.	0.14/0.08 kW	0.24/0.17 kW	0.11/0.08 kW	0.57/0.40 kW
Evaporator	Fan type	Centrifugal	Centrifugal	Centrifugal	Centrifugal	Centrifugal	Centrifugal	Centrifugal
	Max. air flow - high/low	324/228 CFM ¹	950/800 CFM	224 /117 CFM	410/380 CFM	540/500 CFM	565/540 CFM	630/545 CFM
	Max. external static pressure	0.16 IWG	0.6 IWG	N/A	0.31 IWG	0.31 IWG	0.31 IWG	0.5 IWG
Condenser	Fan type	Centrifugal	Centrifugal	Centrifugal	Centrifugal	Centrifugal	Water cool condenser	Centrifugal
	Max. air flow - high/low	700/370 CFM	1,600/1,300 CFM	248 CFM	820/715 CFM	770/710 CFM	N/A	870/760 CFM
	Max. external static pressure	0.12 IWG	0.5 IWG	N/A	0.16 IWG	0.23 IWG	N/A	0.16 IWG
Compressor	Type	Hermetic rotary	Hermetic swing inverter	Hermetic rotary	Hermetic rotary	Hermetic rotary	Hermetic rotary	Hermetic rotary
	Output	0.89 kW	1.38 kW	0.7 kW	0.9 kW	1.16 kW	1.16 kW	1.8 kW
Refrigerant	Type	R-410A	R-410A	R-410A	R-410A	R-410A	R-410A	R-410A
Dimensions	WxDxH	35x23x15.5 in	57x36x20 in	15.5x13.5x29 in	21x27x44 in	21x27x44 in	21x27x41.5 in	21x27x49 in
Net weight/shipping weight		128/141 lb	310/353 lb	77/86 lb	151/182 lb	170/201 lb	178/209 lb	216/253 lb
Power cord	Gauge	N/A	N/A	14 AWG (3-core)	14 AWG (3-core)	12 AWG (3-core)	14 AWG (3-core)	12 AWG (3-core)
	Length	N/A	N/A	6 ft	10 ft	10 ft	10 ft	6 ft
Condensate tank capacity	Auto pump included	Auto pump included	N/A	5 gal	5 gal	5 gal	5 gal	2 @ 5 gal
Operating conditions	Min. - Max. (@ 50% RH)	65°-95°F (Evap.) 65°-113° F (Cond.)	60°-95°F (Evap.) 50°-113°F (Cond.)	63°-88°F	65°-95°F	65° - 95°F	65° - 95°F	65° - 95°F
Max. equivalent	Per cold duct hose	20 ft ³	120 ft ³	N/A	30 ft	25 ft	25 ft	50 ft
Duct length	Hot duct hose	10 ft ³	90 ft ³	6 ft	60 ft	100 ft	N/A	45 ft
Max. sound level	With condenser duct - high/low	52 dB(A)	55 dB(A)	58/57 dB(A)	52/50 dB(A)	61/59 dB(A)	N/A	63/61 dB(A)
	Without condenser duct - high/low	NA/NA	NA/NA	NA/NA	55/53 dB(A)	62/60 dB(A)	62/60 dB(A)	65/63 dB(A)

All specifications subject to change without notice. Standard warranty includes 12 months on entire unit and 36 months on the compressor (except PC7). Visit www.movincool.com/reg for details on MovinCool's industry-best free Extended Warranty Program which includes both parts and labor on units. All models feature compressor overload relay and fan motor protection. All models also feature compressor short-cycle protection, return air thermostat, automatic restart and accommodate a condensate pump kit (except PC7). All models are 50 Hertz (Hz) compatible with a slight performance decrease from specifications listed above (except CM25).



Office Pro® 36*	Office Pro® 60*	Office Pro® 63	Classic 10	Classic Plus 14	Classic 18*	Classic Plus 26*	Classic 40	Classic 60
Programmable	Programmable	Programmable	Digital	Programmable	Digital	Programmable	Digital	Digital
36,000 Btu/h	60,000 Btu/h	60,000 Btu/h	10,000 Btu/h	13,200 Btu/h	18,000 Btu/h	24,000 Btu/h	39,000 Btu/h	60,000 Btu/h
1Phase, 208/230V	1Phase, 208/230V	3 Phase, 460V	1 Phase, 115V	1 Phase, 115V	1 Phase, 208/230V	1 Phase, 208/230V	3 Phase, 220V	3 Phase, 460V
4.3 kW	6.6 kW	6.6 kW	1.1 kW	1.3 kW	1.9 kW	3.1 kW	4.2 kW	5.9 kW
19.6 amps	29 amps	9.5 amps	10 amps	11.9 amps	8.8 amps	15.6/14.0 amps	14 amps	8.8 amps
30 amps	50 amps	20 amps	15 amps	15 amps	15 amps	20 amps	25 amps	20 amps
6-30	6-50	L16-20	5-15	5-15	6-15	6-20	L15-30	N/A
198-250	198-250	440-480	105-125	105-125	198-250	198-250	198 - 250	440-480
0.21/0.13 kW Evap. 0.33/0.12 kW Cond.	0.5/0.33 kW Evap. 1.2/0.93 kW Cond.	0.5/0.33 kW Evap. 1.2/0.93 kW Cond.	0.14 kW	0.24/0.19 kW	0.35 kW	0.55/0.38 kW	0.75 kW Evap. 0.40 kW Cond.	0.75 kW Evap. 0.40 kW Cond.
Centrifugal	Centrifugal	Centrifugal	Centrifugal	Centrifugal	Centrifugal	Centrifugal	Centrifugal	Centrifugal
990/825 CFM	1940/1770 CFM	1940/1770 CFM	265 CFM	440/380 CFM	530 CFM	708/600 CFM	1060 CFM	1580 CFM
0.6 IWG	0.9 IWG	0.9 IWG	0.33 IWG	0.31 IWG	0.48 IWG	0.54 IWG	1.72 IWG	1.35 IWG
Centrifugal	Centrifugal	Centrifugal	Centrifugal	Centrifugal	Centrifugal	Centrifugal	Propeller	Propeller
1490/1060 CFM	2830/2650 CFM	2830/2650 CFM	740 CFM	880/760 CFM	1180 CFM	1680/1460 CFM	2650 CFM	3800 CFM
0.5 IWG	0.85 IWG	0.85 IWG	0.13 IWG	0.19 IWG	0.25 IWG	0.25 IWG	0.05 IWG	0.05 IWG
Hermetic scroll	Hermetic scroll	Hermetic scroll	Hermetic rotary	Hermetic rotary	Hermetic scroll	Hermetic scroll	Hermetic scroll	Hermetic scroll
2.3 kW	3.9 kW	3.3 kW	0.7 kW	0.9 kW	1.1 kW	1.5 kW	2.3 kW	3.89 kW
R-410A	R-410A	R-410A	R-410A	R-410A	R-410A	R-410A	R-410A	R-410A
30x44x52 in	30x52x64 in	30x52x64 in	19x26x41 in	19x26x41 in	19x26x41 in	19x29x47 in	26x43x38 in	32x49x42 in
440/483 lb	623/732 lb	705/835 lb	145/183 lb	166/197 lb	164/205 lb	235/265 lb	344/396 lb	474/566 lb
12 AWG (3-core)	6 AWG (3-core)	12 AWG (4-core)	14 AWG (3-core)	14 AWG (3-core)	14 AWG (3-core)	12 AWG (3-core)	12 AWG (4-core)	N/A
6 ft	6 ft	6 ft	10 ft	10 ft	6 ft	6 ft	6 ft	N/A
Auto Pump Included	Auto Pump Included	5 gal	5 gal	5 gal	5 gal	2@ 5 gal (optional)	N/A	
65° - 95°F	65° - 105°F	65° - 105°F	70° - 105°F	70° - 113°F	70° - 105°F	70° - 113°F	75° - 115°F	75° - 115°F
40 ft	40 ft	40 ft	40 ft	30 ft	50 ft	60 ft	Varies	Varies
60 ft	100 ft	100 ft	60 ft	60 ft	60 ft	45 ft	40 ft	40 ft
65/62 dB(A)	69/67 dB(A)	69/67 dB(A)	55 dB(A)	57/55 dB(A)	63 dB(A)	66/64 dB(A)	N/A	N/A
67/66 dB(A)	71/69 dB(A)	71/69 dB(A)	58 dB(A)	60/58 dB(A)	67 dB(A)	69/67 dB(A)	72 dB(A)	72 dB(A)

1 Measured with two 6 ft ducts with one 90° bend each, supply grill and return grill with filter (0.16 IWG external static pressure) (ducts not included)
 2 Measured with two 20 ft ducts with one 90° bend each, supply grill and return grill with filter (0.30 IWG external static pressure) (ducts not included)
 3 Confirm pressure drop of duct, grills and filter with manufactures specifications (0.16 IWG external static pressure) (ducts not included)
 4 Rating Conditions: Evaporator: 80°F at 50% RH / Condenser: 95°F
 5 Rating Conditions: Air: 80°F at 50% RH / Water (EWT/LWT): 85°F/95°F
 *Specification information shown with 230V

Classic Plus Series



The Classic Plus Series cools down harsh industrial, warehouse environments just like its predecessor, the original MovinCool Classic. But, unlike the Classic Series, the Classic Plus offers the added advantage of programmable temperature control and a wider range of operating temperatures. The Classic Plus also requires little or no installation, making these versatile models ready to bring instant cooling relief to the hottest spots. Simply roll it in, plug it in and turn it on!

Key features

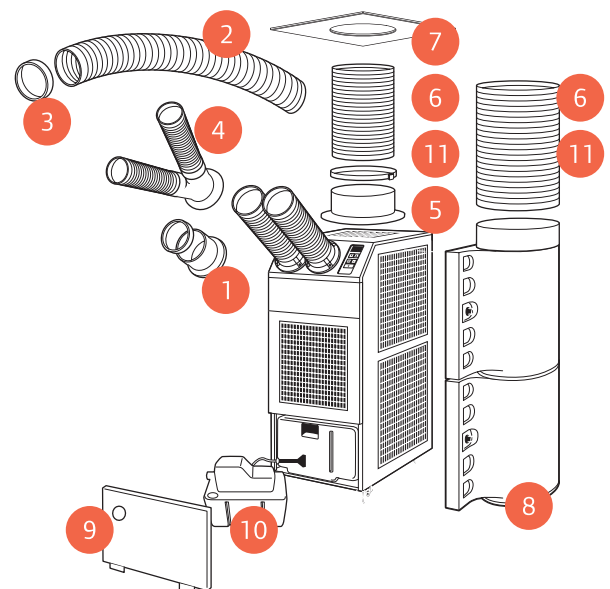
- 24/7 Programmable operating modes
- Digital temperature control
- Two-speed fan
- Handles temperatures up to 113°F
- Adjustable nozzles to direct cooling on critical hot spots

Where it's used

- Warehouses
- Assembly lines
- Manufacturing plants
- Process cooling
- Moisture removal
- Outdoors and events

Individual part descriptions for MovinCool Classic/Classic Plus Series

1	Cold air flange kit	5" or 6" diameter white metal flange with wire clamp and mounting screws.
2	Cold air extension duct	5" or 6" diameter white plastic duct that extends from 6½' to 10' in length.
3	Trim ring	5" or 6" diameter black plastic ring mounts as end caps for extension ducts.
4	Dual duct	5" diameter white plastic flange with two 4" nozzles that extend to 2' in length.
5	Warm air flange kit	12" diameter gray metal flange with wire clamp and mounting screws.
6	Warm air duct	12" adjustable diameter white plastic duct that extends from 6½' to 10' in length.
7	Ceiling tile	24"×24" white tile with 12" hole for warm air duct.
8	Air plenum	White plastic plenum, hinged for filter cleaning.
9	Cover plate	Blue metal plate covers condensate collection area.
10	Condensate pump kit	110V or 220V pump kit includes ¾" diameter ×20' length hose and installation hardware.
11	Warm air flexible duct kit	12" diameter, wire-reinforced, accordion-style duct in 10' lengths for condenser exhaust. Includes clamp.



Accessories



Auto condensate removal: Why bother with emptying the drain tank when you can install a condensate pump to remove the water automatically? This pump has a 17-ft. lift capacity to reach virtually any remote drain. With the condensate pump installed, drainage is automatic and access to the compartment is no longer necessary. A cover plate can then be added to conceal and protect the pump

#	Part name	Classic 10	Classic 18	Classic Plus 14	Classic Plus 26
9	Cover plate	484009-0480	484009-0480	484009-0480	484009-0480
10	Condensate pump kit	LA484789-0121	LA484789-0090	LA484789-0080	LA484789-0090



Condenser air removal: To exhaust the warm condenser air above the work area, attach the warm air flange and duct to the top of the unit. When using MovinCool inside an office, simply replace the ceiling tile with the MovinCool ceiling tile and insert the duct to exhaust the warm air. No special tools or equipment are required for the installation.

#	Part name	Classic 10	Classic 18	Classic Plus 14	Classic Plus 26
5	Warm air flange Kkit	481170-0191	481170-0191	481170-0191	481170-0191
6	Warm air duct ^(a)	481744-0060	481744-0060	481744-0060	481744-0060
7	Ceiling tile ^(b)	LA146373-8280	LA146373-8280	LA146373-8280	LA146373-8280
11	Warm air flexible duct kit ^(c)	LAY45771-0060	LAY45771-0060	LAY45771-0060	LAY45771-0060



Condenser air intake: When balanced air flow is required, attach the air plenum with a duct from the side of the unit to an outside air source. The air to the condenser is pulled from outside the room to eliminate problems associated with negative air pressure.

#	Part name	Classic 10	Classic 18	Classic Plus 14	Classic Plus 26
6	Air duct ^(a)	481744-0060	481744-0060	481744-0060	481744-0060
7	Ceiling tile ^(d)	LA146373-8280	LA146373-8280	LA146373-8280	LA146373-8280
8	Air plenum	LAY84270-0040	LAY84270-0020	LAY84270-0020	LAY84270-0030
11	Warm air flexible duct kit ^(b)	LAY45771-0060	LAY45771-0060	LAY45771-0060	LAY45771-0060



Remote cooling: The amount of air supplied to remote areas can be quickly and conveniently increased by attaching 10-ft. extension ducts directly over the standard ducts. For more permanent installations, use the flange and clamp to secure the extension ducts to the unit. Each duct can be extended 30 to 60 feet from the unit, depending on the model. Add trim rings to the end of the extension ducts to give a finished look and keep the ducts from unraveling. The dual duct accessory can be used to divide each 5-inch nozzle opening into two 4-inch outlets to multiply your cooling options.

#	Part name	Classic 10	Classic 18	Classic Plus 14	Classic Plus 26
1	Cold air flange kit	481170-0180	481170-0180	481170-0180	481170-0250
2	Extension duct ^(e)	481744-0090	481744-0090	481744-0090	481744-0030
3	Trim ring ^(f)	481851-0200	481851-0200	481851-0200	481851-0210
4	Dual duct	484209-0030	484209-0030	484209-0030	N/A



(a) #5 is required

(b) #5 & 6 are required

(c) #8 is required

(d) #6 & 8 are required

(e) #1 is required

(f) #1 & 2 are required

(g) If using with #7, two #5's are required

(h) If using with #7, two #5's & one #8 are required

NOTE: All part numbers come with one part except where noted. All kits include additional pieces such as clamps and screws.

See parts description box for more information

Classic Series



Time tested and proven, the Classic Series has been cooling the world's factories, warehouses and work places for over thirty years. The Classic's rugged design and unparalleled reliability has made it the unit of choice for production managers, quality engineers and warehouse operators. With a wide range of cooling capacities and options there is a Classic model for virtually every cooling need.

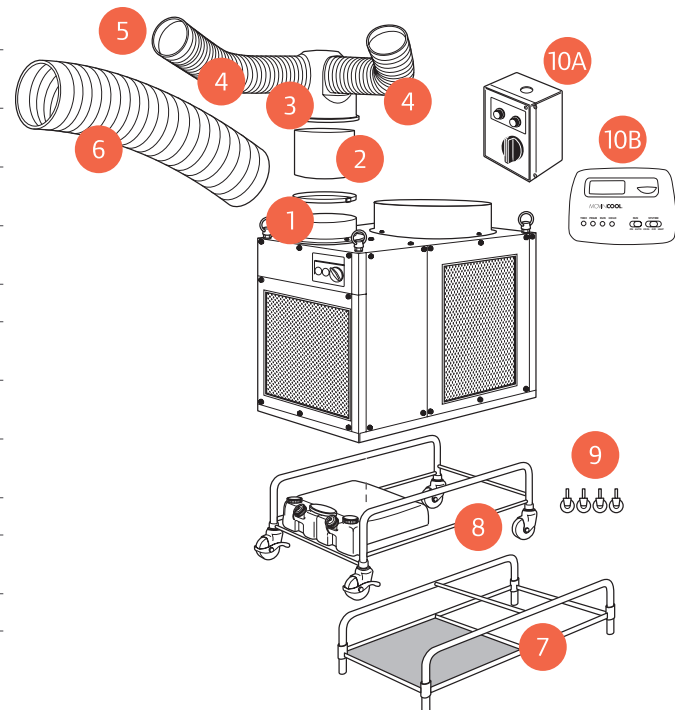
Key features

- Digital temperature controls
- Rugged design for harsh environments
- Maintenance-free operation
- Totally self-contained
- Customized spot cooling options
- Up to 80 ft of extension ducting to enable remote spot cooling

Where it's used

- Warehouses
- Assembly lines
- Manufacturing plants
- Process cooling
- Moisture removal
- Outdoors and events

Individual part descriptions for MovinCool Classic 40/Classic 60		
1	Cold air flange kit	12" diameter gray metal flange with wire clamp and mounting screws.
2	Chamber extender	Gray metal cylinder raises exhaust air chamber 16" above unit.
2A	Chamber extender flange kit	Gray metal flange connects chamber extender to unit. (not shown)
3	Two-way chamber	Insulated gray plastic chamber diverts airflow in two directions. Use 6" extension ducts.
3A	Three-way chamber (not shown)	Diverts airflow in three directions. Use 6" extension ducts.
3B	Reducer flange kit (not shown)	Gray metal flange converts mounting holes on Classic 60 for two- or three-way chamber and chamber extender flange.
4	Extension duct	6" adjustable diameter white plastic duct that extends from 6½' to 10' in length.
5	Trim ring	6" diameter black plastic end cap for extension duct.
6	Extension duct	12" adjustable diameter white plastic duct that extends from 6½' to 10' in length.
7	Stand kit	Blue metal, tubular frame raises unit off the ground. (Available for Classic 40 only)
8	Wagon kit	Blue metal, tubular frame with four casters, drain spout assembly and two 5-gal. condensate tanks. (Available for Classic 40 only)
9	Caster kit	Four casters and wrench.
10A	Remote control kit	Kit includes remote control box and installation hardware. Use six 18AWG plus one ground wire (wire not included).
10B	Remote control kit	Weekday and weekend programmable digital millivolt thermostat.



Accessories



10A



10B



Multiple or remote area cooling: Cooling several hot spots is not a problem with the two- or three-way chamber. Extension ducts in 10-ft. sections can be used to bring cooling to remote or different locations. Attach trim rings at the end of the extension ducts to give a finished look and keep the ducts from unraveling.

#	Part name	CLASSIC 40	CLASSIC 60
1	Cold air flange kit	481170-0191	481170-0191
2	Chamber extender	481849-1431	481849-1431 ^(f)
2A	Chamber extender flange kit*	481170-0090	481170-0090 ^(a)
3	Two-way chamber	481769-0041	481769-0041 ^(a)
3A	Three-way chamber (not shown)	481769-0051	481769-0051 ^(a)
3B	Reducer flange kit	N/A	481170-0151
4	Extension duct (6-inch) ^(b)	481744-0030	481744-0030
5	Trim ring ^(c)	481851-0210	481851-0210
6	Extension duct (12-inch) ^(d)	481744-0060	481744-0060

Remote control: When the unit is installed in a remote location, such as outdoors or overhead, use the remote control to allow convenient access to controls. For part 10A, the kit includes the operational control, a cover plate to prevent tampering with controls, and installation hardware. Use six 18AWG plus one ground wire to connect the control to the unit (wire not included). Part 10B is a weekday & weekend programmable digital millivolt thermostat.

#	Part name	CLASSIC 40	CLASSIC 60
10A	Remote control kit (for models manufactured up to 2008)	484500-0431	484500-0431
10B	Remote control kit (for models manufactured after 2008)	LA484500-3430	LA484500-3430

Portability: To allow portability of these high-capacity MovinCool units, use the caster kit or the wagon kit. The stand kit provides proper ground clearance for permanent exterior installations.

#	Part name	CLASSIC 40	CLASSIC 60
7	Stand kit	484750-0020	N/A
8	Wagon kit	484710-0021	N/A
9	Caster kit	484709-0011	484709-0020



- (a) #3B is required for Classic 60 only
 - (b) #3 is required (order 2 or 3 ducts depending on chamber selected)
 - (c) #3 & 4 are required
 - (d) #1 is required
 - (e) #2A is required
 - (f) #2A & 3B are required for Classic 60 only
- * Must order quantity of 2 per each chamber extender used
 NOTE: All part numbers come with one part except where noted. All kits include additional pieces such as clamps and screws. See parts description box for more information.

Why MovinCool?

Innovation

DENSO Corporation, the pioneer of portable air conditioning, continues to drive the industry with technical advances like those found in the latest Office Pro® and Ceiling Mounted Series.

Quality

MovinCool® units are a product of DENSO Corporation, a J.D. Power and Associates award winning manufacturer. Every unit passes a series of performance tests to ensure 100% quality, proven with units operating for over three decades. And we back it up with one of the best warranty coverages in the business.

Flexibility

MovinCool units can be customized to cool anything, anyplace, anywhere by simply choosing accessories to enhance warm air exhaust, condensate removal, remote spot cooling and make-up-air.

- Brings refreshing air to cool people, processes and equipment.
- Can be easily moved from one location to another, plugged in and turned on to start cooling instantly.
- Provides easy, affordable, and flexible solutions to any heat-related problem

*2011 DENSO SALES CALIFORNIA, INC.
MovinCool, SpotCool and Office Pro are registered trademarks of DENSO Corporation



Ingersoll Rand (NYSE:IR) is a world leader in creating and sustaining safe, comfortable and efficient environments in commercial, residential and industrial markets. Our people and our family of brands— including Club Car®, Hussmann®, Ingersoll Rand®, Schlage®, Thermo King® and Trane®— work together to enhance the quality and comfort of air in homes and buildings, transport and protect food and perishables, secure homes and commercial properties, and increase industrial productivity and efficiency. We are a \$13 billion global business committed to sustainable business practices within our company and for our customers.